

Check Valve 4000

DN 10 up to DN 80

Non-return valve for backflow prevention

- All parts in contact with process medium made from stainless steel
- Compact design
- Sealing material PTFE

Technical Information

Nominal sizes	angle seat body rectangular body flange body	DN10 - DN80 DN15 - DN50 DN15 - DN50
Body material	stainless steel 1.4408	
Material inner parts	stainless steel 1.4571/1.4310	
Material seating seal	PTFE (EPDM, NBR, FKM, PEEK)	
Connections	pipe thread acc. ISO 228-1 NPT-thread welding ends tri-clamp flanges acc. DIN EN 1092-1 flanges acc. ANSI 150	
Pressure class	PN 40	
Cracking/lifting pressure	ca. 0,2 bar (ca. 0,1bar with reduced spring tension)	
pressure limitation	limitation for dangerous gases acc. Pressure equipment directive 97/23/EG (category I): PS x DN < 1000	
Temperature range	-40°C up to +200°C, optional up to +220°C	



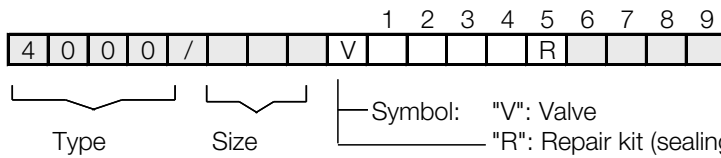
Differential Pressure

Nominal size DN	adm. differential pressure (backpressure) bar	
	seating seal	
	PTFE/PEEK	FKM / EPDM / NBR
10	40	16
15	40	16
20	40	16
25	40	16
32	40	16
40	40	16
50	25	16
65	25	16
80	25	16

Check Valve 4000



Ordering Number System



1 - 5: Please quote all 5 sections.

6 - 9: Quote only if required.

1. Body type	2. Connection	3. Body material	4. Seating seal	5. Pilot function	6. Springs	7. Body	8. Upper part	9. Special versions
1 angled body	0 BSP thread	2 stainless steel	- without	R check valve (please quote)	- standard	- standard	- standard	S special versions
2 flanged body	2 without thread with welding ends (socket weld connection)		0 PTFE		0 reduced spring resistance			
3 flange valve ANSI 150	5 NPT-thread		1 FKM (Viton)		B without spring			
7 angle valve PN40	6 without thread		2 EPDM					
9 flange valve PN40	9 angle seat valve acc. DIN EN 1092-1		3 NBR					
	C angle seat valve acc. ANSI 150		5 PTFE with 25% glass fibre					
	D with welding ends acc. DIN 11850		8 PEEK for applications above 160°C					
	E with welding ends		9 EPDM (FDA)					
	H with welding ends acc. ISO							
	T tapered pipe thread acc. EN 10226-2							
	Z Tri-Clamp connection (inch)							

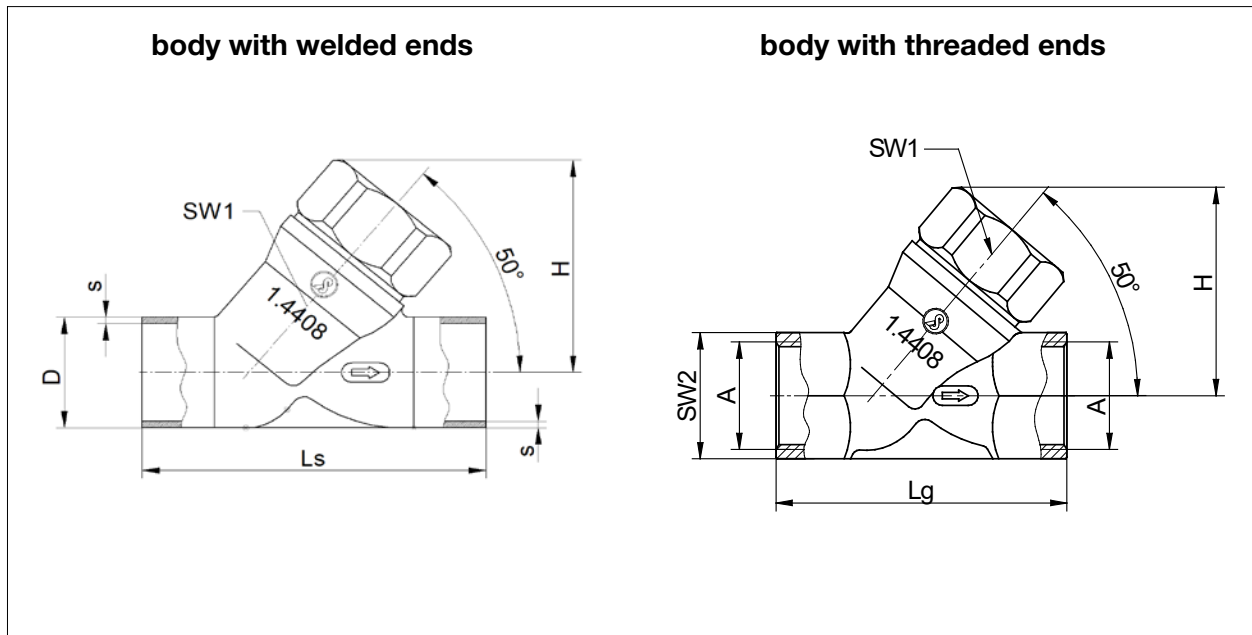
Ordering example:

4000/020V1020R

check valve with angle body, nominal size DN20, whitworth thread, stainless steel body, PTFE seat material, check valve

Dimensions

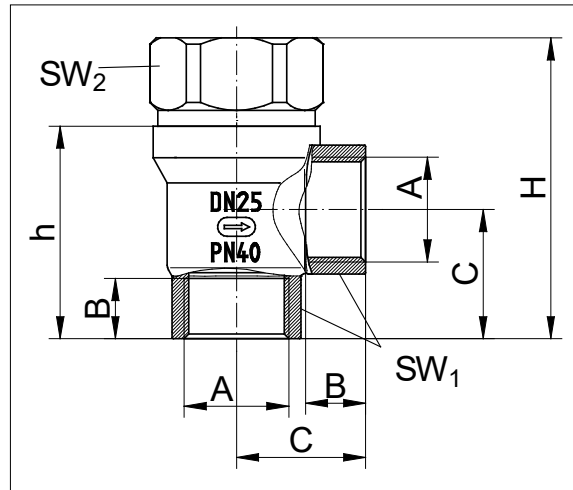
angle seat body



DN	with welding ends acc. ISO			with G-thread			H	SW1	Kvs-Value	Weight kg
	D	s	Ls	A	SW2	Lg				
10	-	-	-	3/8"	23	60	43,5	27	1,0	0,25
15	21,3	2	80	1/2"	25	65	42,8	27	2,6	0,25
20	26,9	2,3	90	3/4"	31	75	54	32	6	0,42
25	33,7	2,6	100	1"	39	90	62,9	36	11,5	0,65
32	42,6	2,6	110	1 1/4"	48	110	74	36	18,5	1,1
40	48,3	2,6	120	1 1/2"	55	120	79,5	27	28	1,05
50	60,3	2,9	150	2"	68	150	96	36	41	2,2
65	76,1	2,9	180	2 1/2"	85	180	123,1	36	75	4
80	88,9	3,2	220	3"	100	214	152,2	41	120	7

Dimensions in mm

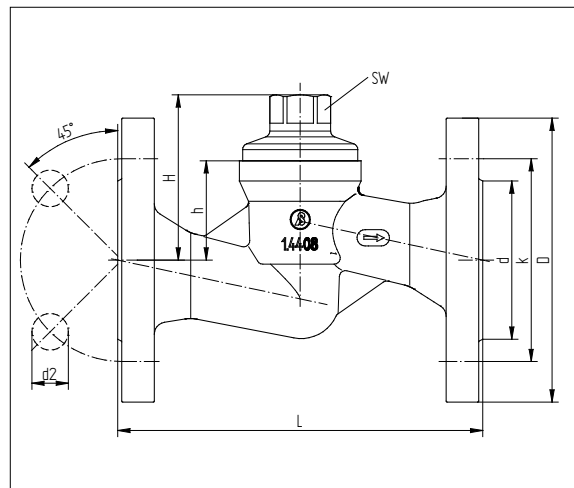
rectangular body



DN	with G-thread		with NPT-thread		C	SW1	SW2	h	H	Weight kg
	A	B	A	B						
15	G 1/2"	15	NPT 1/2"	14,5	41	25	32	64	75	1,3
20	G 3/4"	16,3	NPT 3/4"	15	41	32	36	66	88,5	1,7
25	G 1"	19,1	NPT 1"	17,9	41	41	36	67,5	95,5	2,0
32	G 1 1/4"	21,4	NPT 1 1/4"	18,4	65	50	27	93	125,5	2,2
40	G 1 1/2"	21,4	NPT 1 1/2"	18,4	65	55	36	101	140	3,4
50	G 2"	25,7	NPT 2"	18,4	65	68	36	116	166,5	5,3

Dimensions in mm

flanged body



DN	L	D	k	H	h	d	d1	SW	Weight kg
15	130	95	65	43,7	33	45	14	32	3,78
20	150	105	75	61	38,5	58	14	36	3,84
25	160	115	85	72	44	68	14	36	4,40
32	180	140	100	81,5	49	78	18	27	6,05
40	200	150	110	98,5	59,5	88	18	36	8,11
50	230	165	125	131,4	81,2	102	18	36	11,55

Dimensions in mm

Text and pictures are not binding. We reserve the right, to alter the equipment.