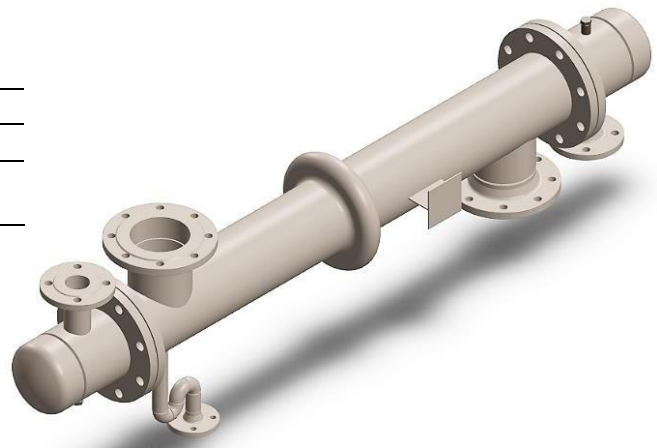


SVC STEAM VENT CONDENSER

When the pressure of saturated condensate is reduced, a portion of the liquid “flashes” to low-pressure steam. Depending on the pressures up stream, the flash steam contains normally 3% to 50% of the energy content of the original condensate. Almost cases, condensate receivers the flashing steam is vented to atmosphere and its energy content lost. **The SVC Steam Vent Condenser** can be installed in the vent to recover this energy.

SVC Steam Vent Condenser is a heat recovery unit. It is recovery flash steam discharge from steam trap system to re-heat process fluid, increasing energy efficient use in plant and reducing heat loss to atmosphere. The SVC designed to recover the latent heat of steam by condensing that steam vapor to liquid which may then be safely diverted and recovered while minimizing equipment damage due to corrosion, otherwise energy vent to atmosphere. The SVC completed stainless steel construction, flanged connection.

Series	SVC
Pressure Design	PN16
Construction Material	Stainless steel
Connections	Flanged DIN, ANSI, Clamp



Benefits of our Technology:

- Reduced CO2 + Carbon emissions
- Increasing energy efficient use in plant
- Energy recovery from latent heat process
- Eliminate remaining flash steam energy loss
- Water recovery from condensate
- Stop moisture damage to the roofing structure
- Water and chemical treatment savings
- Improved cash flow

Materials	
Component	Material
Shell	Stainless steel
Expansion joint	Stainless steel
Tube sheets	Stainless steel
Flanged connection	Stainless steel
Tubes	Stainless steel

Available application:

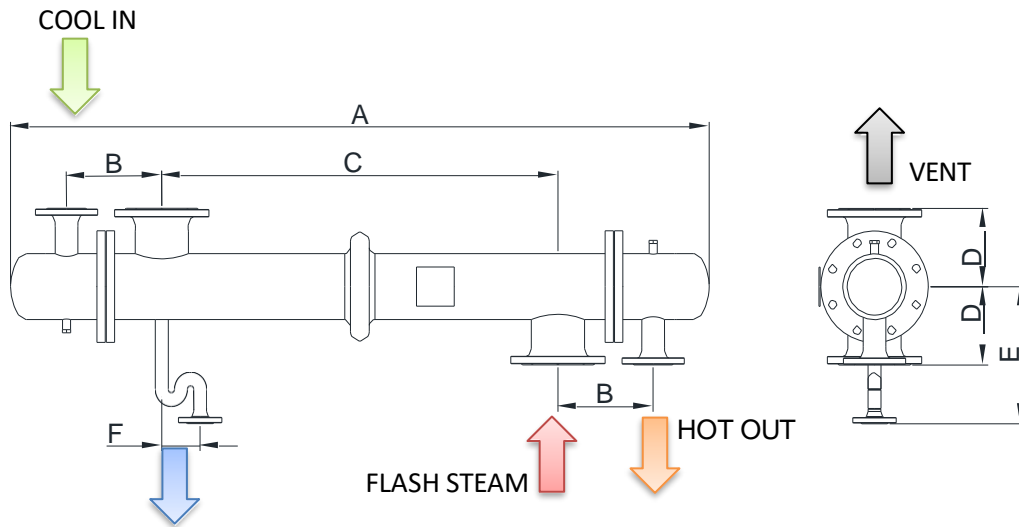
MODEL	HEAT RATE KW	WATER M3/HR
SVC80	66	4
SVC100	100	6
SVC150	160	10
SVC200	280	16
SVC250	450	26

Sized with water from 40 to 60 °C.

Other flowrate and temperature please contact to our sales representative.

Other application available on request.

Dimension table (mm):

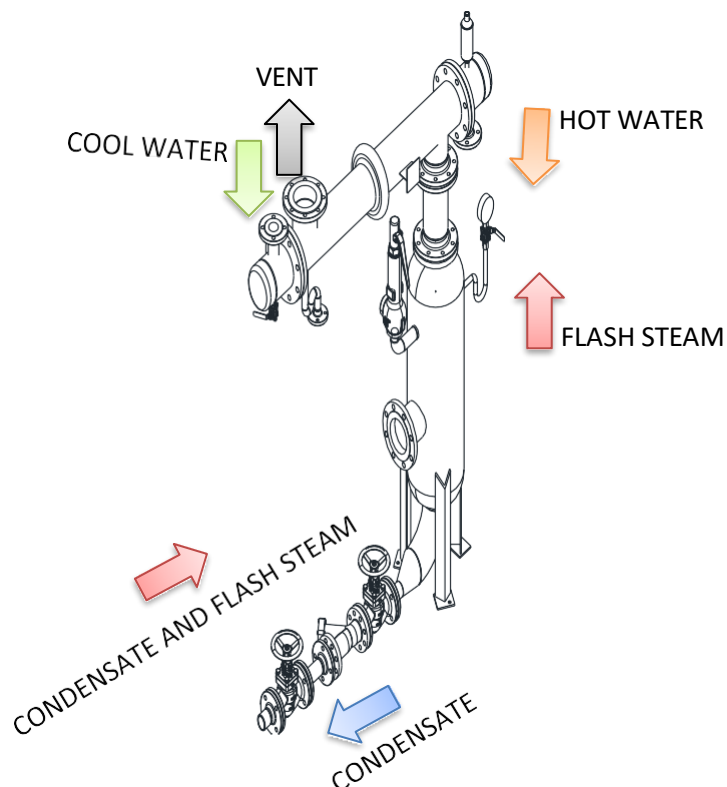


MODEL	STEAM IN/VENT OUT	COOL IN/HOT OUT	A	B	C	D	E	F	DRAIN
SVC80	DN65	DN32	1,560	206	950	150	250	101.6	DN15
SVC100	DN80	DN40	1,660	218	1000	150	250	101.6	DN25
SVC150	DN125	DN50	1,860	255	1050	200	350	101.6	DN25
SVC200	DN150	DN65	2,020	286	1100	220	400	101.6	DN25
SVC250	DN200	DN80	2,210	327	1150	250	450	101.6	DN25

dimensions in(mm)
all flanged PN16

A manufacturer's Hydraulic Test Report and Material Certification documentation is available on request at the time of order placement.

Typical installation:



CEFI COMPANY LIMITED

Address: 115/49 Thanh Loc 37, An Phu Dong ward 71516, Ho Chi Minh city, Viet Nam

Website: <https://cefiint.com/>, E-mail: sales@cefiint.com