

## CEFI 25 STEAM TRAP

**CEFI 25** Steam trap one piece design with custom venturi made from stainless bar and the most advanced steam traps on the market. CEFI 25 steam trap automatic modulating condensate release to condensate pipeline. Horizontal or vertical threaded connections on the pipeline systems, designated CEFI 25 are available up to DN25, with variety capacities release, depend on process. Flow direction marked on steam trap body. Low maintenance steam trap with no moving parts, guarantee performance.

Series	CEFI 25
Size:	DN15 to DN25
Connections:	Threaded end NPT, BSP
Body Material:	Stainless steel SS304, SS316
PMO Max. Operating Pressure:	40 BARG
TMO Max. Operating Temperature:	Saturated Steam Temperature

### Benefits of our Technology:

- Heating efficiency
- Highly resistant with water hammer
- No repair and maintenance costs
- Stable heating process
- Reduce energy cost 5% - 25%
- Each trap supplied with full sizing and commissioning service
- Low operating costs
- Reduced fuel emissions
- 10 year performance guarantee

### How It Works

CEFI 25 steam trap operating with orifice principle. At start up the cold condensate and air release via orifice hole with maximum capacity. Condensate from system release via orifice hole, automatic modulating condensate release to condensate pipeline...

### Typical Application:

CEFI 25 steam trap with inline pipe connections are used for release condensate and air in industrial process applications such as process heating, heat exchangers, air heater, condensate from main pipeline, steam humidity separator...

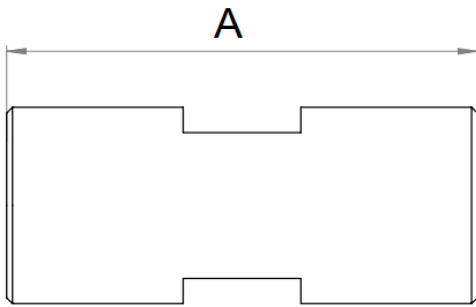
### Customers sectors:

- Hospitals & Hotels
- Food Processing Plants
- Pharmaceutical Industry
- Chemical Industry
- Manufacturing Industry
- Oil & Gas Industry
- Paper & Pulp Industry
- Industrial Sector
- Commercial Laundries
- Power Plants
- Beverage Industry
- Textile Industry
- and many more.



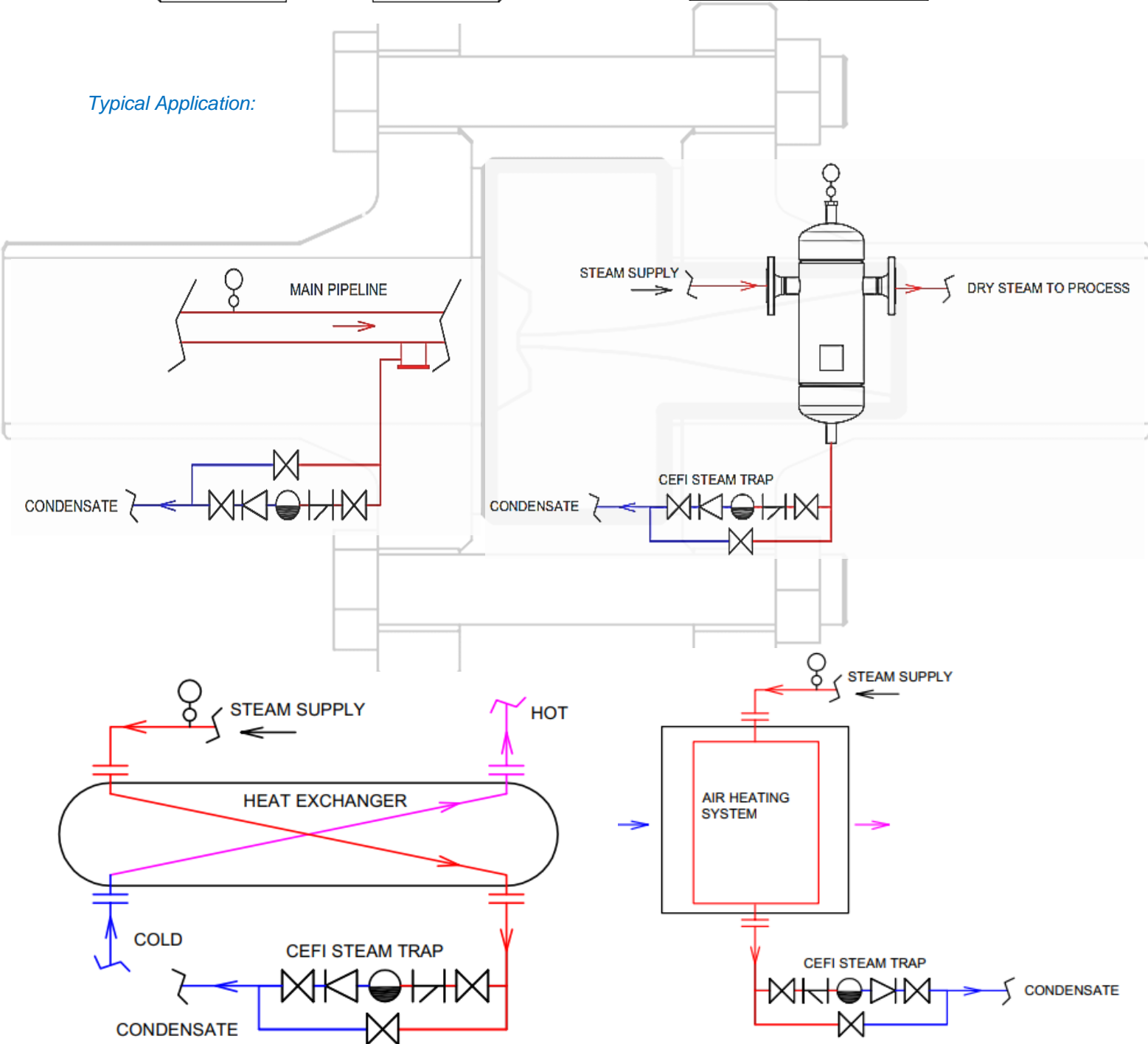
# CEFI 25 STEAM TRAP

Dimensions (mm):



SIZE DN	A(mm)
DN15	80
DN20	90
DN25	95

Typical Application:



**CEFI COMPANY LIMITED**