

# INSTALLATION GUIDE - CEFI 25 STEAM TRAP MANUAL

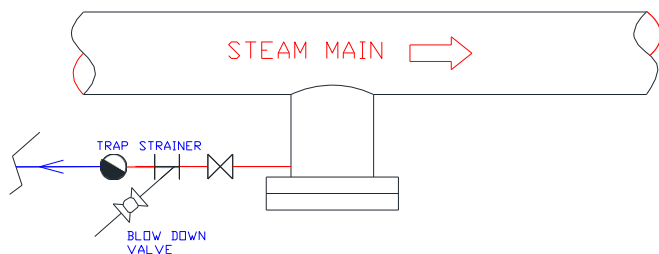


## Installation

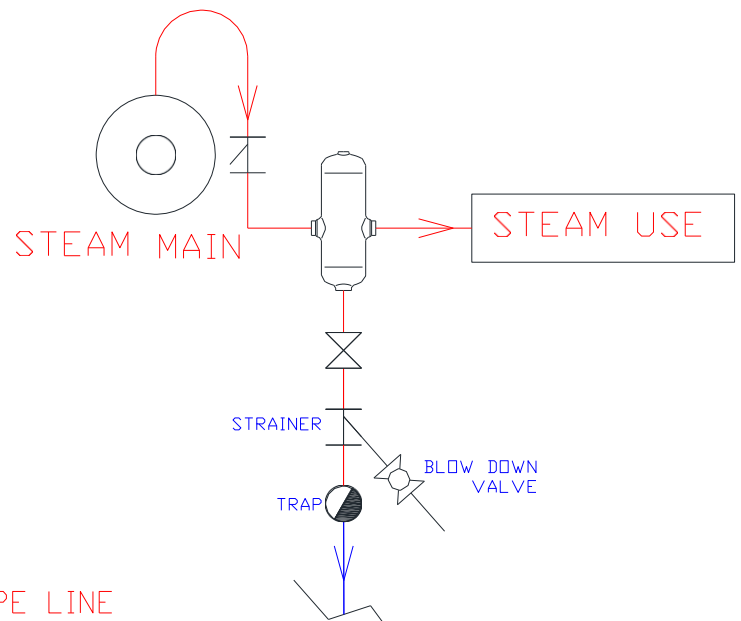
- Step 1:** Visual check steam trap information.
- Step 2:** Identify inlet / outlet by “→” on the body.
- Step 3:** Before install steam trap, remove scale and dirt inside pipeline.
- Step 4:** Install the trap below the equipment being drained condensate. The steam trap need to install correct direction indicated on the trap body.

## Typical Installation:

### 1. Main pipeline drain



### 2. Steam separator drain



### 3. Process drain

