

## CEFI 22 STEAM TRAP

**CEFI 22** steam trap one piece design with custom orifice made from special stainless and the most advanced steam traps on the market, reduces energy loss, has the ability to automatically regulate discharge flow through the condensate water system. There are no moving parts inside so the possibility of damage and need for maintenance during operation is low. Connect the steam trap to the pipeline system with flanged. Steam traps are designed up to size DN50 with variety flows rate. It is depending on each the technological system. Install horizontally or vertically. The direction is marked on the steam trap body. Guaranteed successful operation with each application.

Steam trap application for heating systems, moisture separation, water discharge on main pipeline.

Series	CEFI 22
Size	DN15 to DN50
Connections	Flanged DIN, ANSI, JIS
Body Material	Stainless steel
Design Pressure	PN40
Design Temperature	350°C



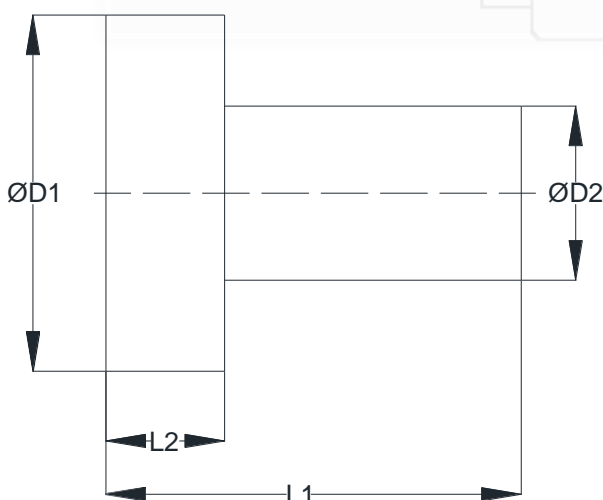
### Benefits of our Technology:

- Reduce energy consumption loss
- Reduce energy up to 20%
- Heating efficiency
- Efficient and stable heating system
- Highly resistant with water hammer
- No moving parts, so low maintenance costs
- Low operating costs
- Compact, lightweight, low heat emissions
- Water and chemical treatment savings
- Improved cash flow
- Each trap supplied with full sizing and commissioning service
- Over 20 years performance guarantee

### How It Works

**CEFI 22** steam trap operating with orifice principle. At start up the cold condensate and air release via orifice hole with maximum capacity. Condensate from system lease via office hole, automatic modulating condensate release to condensate pipeline...

### Dimensions (mm):



### Typical Applications:

**CEFI 22** steam trap with inline pipe connections are used for release condensate and air in industrial process applications such as process heating, heat exchangers, air heater, condensate from main pipeline, steam humidity separator...

### Customers sectors:

- Hospitals & Hotels
- Food Processing Plants
- Pharmaceutical Industry
- Chemical Industry
- Manufacturing Industry
- Oil & Gas Industry
- Paper & Pulp Industry
- Industrial Sector
- Commercial Laundries
- Power Plants
- Beverage Industry
- Textile Industry
- And many more.

SIZE DN	D1	L2	L1	D2
DN15	42	20	60	14
DN20	50	20	67	18
DN25	60	20	75	24
DN32	70	25	83	30
DN40	80	30	95	37
DN50	90	30	105	48

### CEFI COMPANY LIMITED

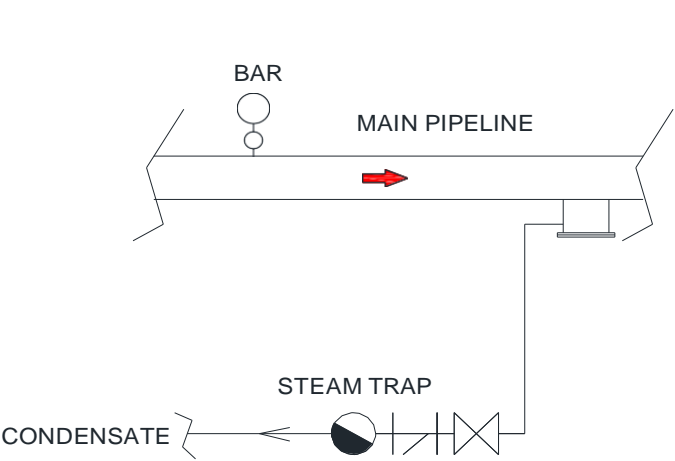
Address: 115/49 Thanh Loc 37, An Phu Dong ward 71516, Ho Chi Minh city, Viet Nam

Website: <https://cefiint.com/> , E-mail: [sales@cefiint.com](mailto:sales@cefiint.com)

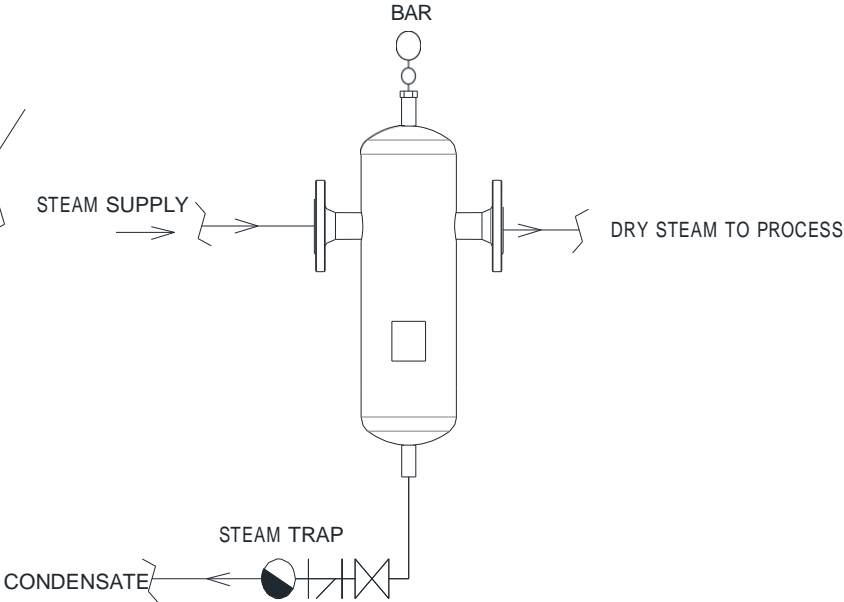
# CEFI 22 STEAM TRAP

Typical Application:

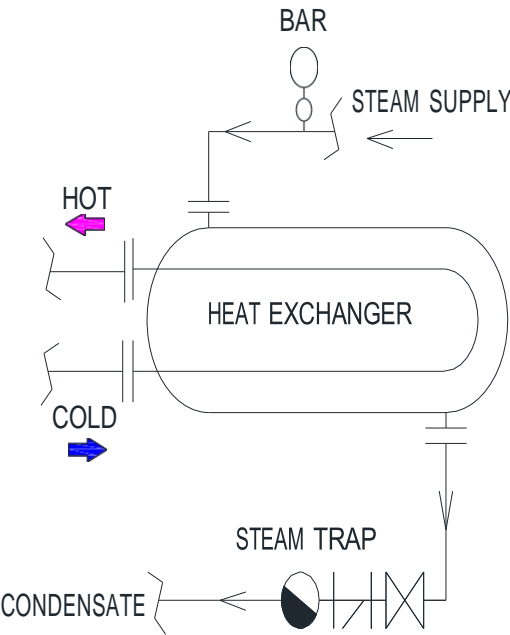
## STEAM PIPELINE



## HUMIDITY SEPARATOR



## HEAT EXCHANGER



## AIR HEATING SYSTEM

