

## 300142\_T\_STANDARD SEALS\_BUTT-WELDING IN ACCORDING TO BS-OD (ASTM A-270)



### THREE-way ball valve 4 seals with "T" port

Drive: Inox lever

Connection: Butt-welding in according to BS-OD (ASTM A-270)

Flow: Full

Material: Aisi 316L (1.4404)

Measure: DN10 a DN100

Seals: Modified Virgin P.T.F.E.

Operating temperature: -20°C+170°C

Outer finish: Polished

On request:

Antistatic device ATEX II 2 G-D T4 zone 1-21

M.O.C.A. CE 1935/2004

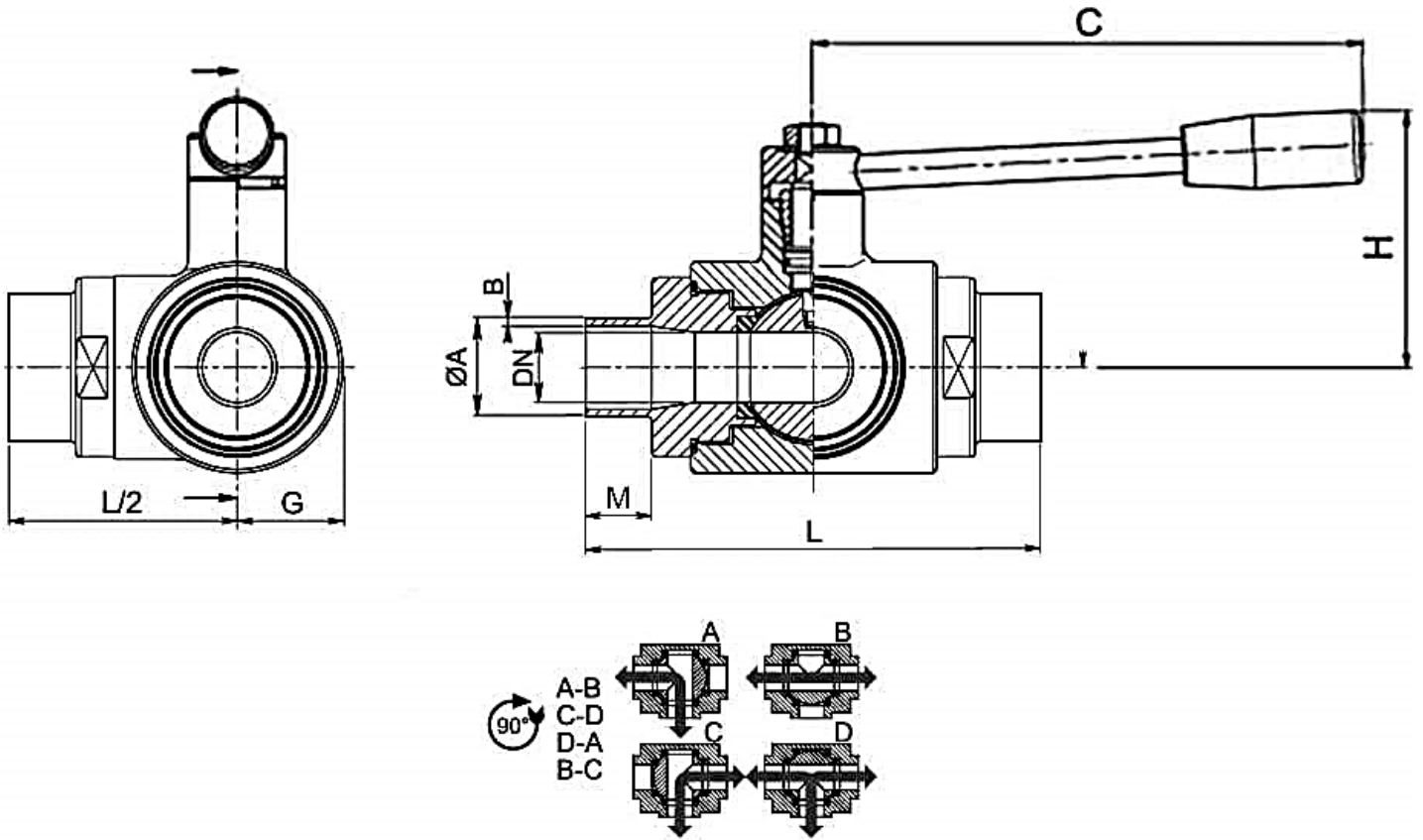
• Seals made of:

PTFE with glass -20°C+170°C

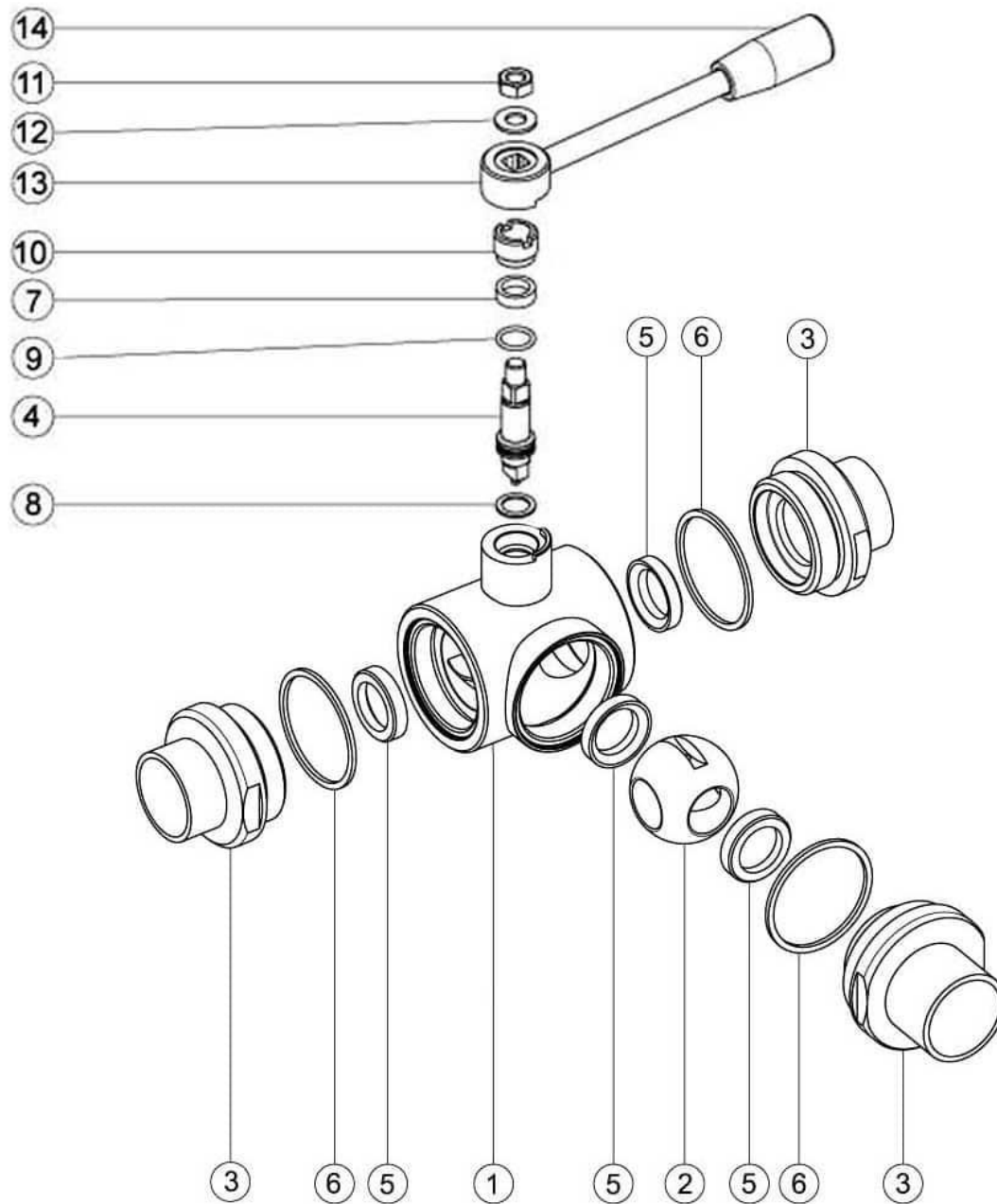
PTFE with carbographite -20°C+180°C

PTFE with inox -20°C+200°C

UHMW High-molecular weight polyethylene -20°C+80°C



DN	$\varnothing A \times B$	M	L	G	C	H	PN	Kg
10	12,7 X 1,65	17	108	22,5	110	60	100	-
15	19,05 X 1,65	18	118	26	110	65	100	-
20	25,4 X 1,65	19	130	30	160	70	100	-
25	25,4 X 1,65	19	140	35	160	80	64	2,78
32	38,1 X 1,65	19	156	42,5	190	95	64	-
40	38,1 X 1,65	19	172	50	190	110	64	-
50	50,8 X 1,65	19	182	55	220	120	40	-
65	63,5 X 1,65	21	196	80	285	130	40	-
80	76,1 X 2	27	256	100	310	145	40	-
100	101,6 X 2,11	27	286	120	310	160	16	-



POS.	DENOMINATION	PCS	MAT.
1	Body	1	AISI 316L
2	Ball	1	AISI 316L
3	Sleeves	3	AISI 316L
4	Stem	1	AISI 316L
5	Ball Seals	4	PTFE Vergine Modificato
6	Sleeve Seals	3	PTFE
7	Stem Seal	1	PTFE
8	Stem Seal	1	PTFE
9	Stem or-Seal	1	FKM
10	Register ring	1	AISI 304L (303)
11	Nut	1	AISI 304L
12	Washer	1	AISI 304L
13	Lever	1	AISI 304L
14	Handle	1	Resin

